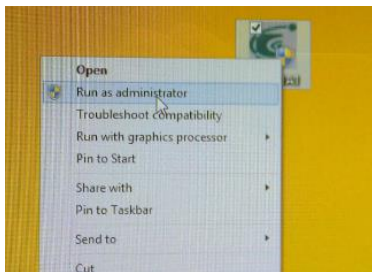


Flash BIOS SOP

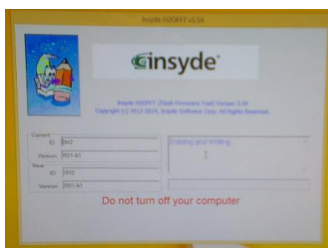
A) Flash BIOS in Windows environment

Example: BIOS **0H2R01B3.exe**

1. Copy “**0H2R01B3.exe**” file, and put file on Windows Desktop.
2. Make sure system is plugged in AC adaptor .
3. Use right click of touchpad on “**0H2R01B3.exe**” file, and select “Run as administrator”, as below screenshot.



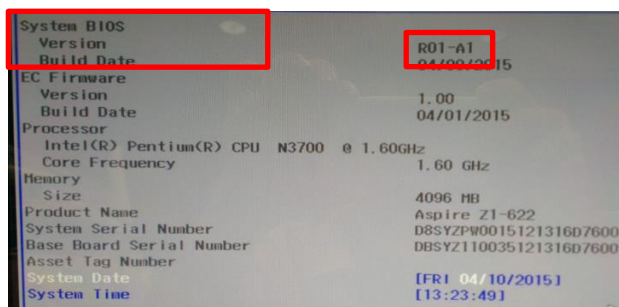
4. Click “Run as administrator” to start to flash BIOS.
5. System will auto restart and show up flash BIOS process, as below screenshot.



6. When flash process done, system will auto restart.
7. When Post logo displayed, press DEL key enter BIOS setup menu.



8. Access the Information page of BIOS setup menu, make sure BIOS version is same as updated BIOS version.



B) Flash BIOS in DOS environment

Example: BIOS 0H2

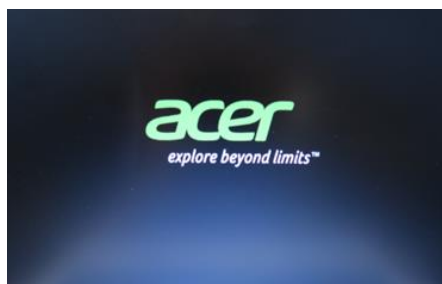
1. Prepare a bootable USB storage.

(Refer “How to establish Bootable USB disk.pptx” to create bootable USB storage.)

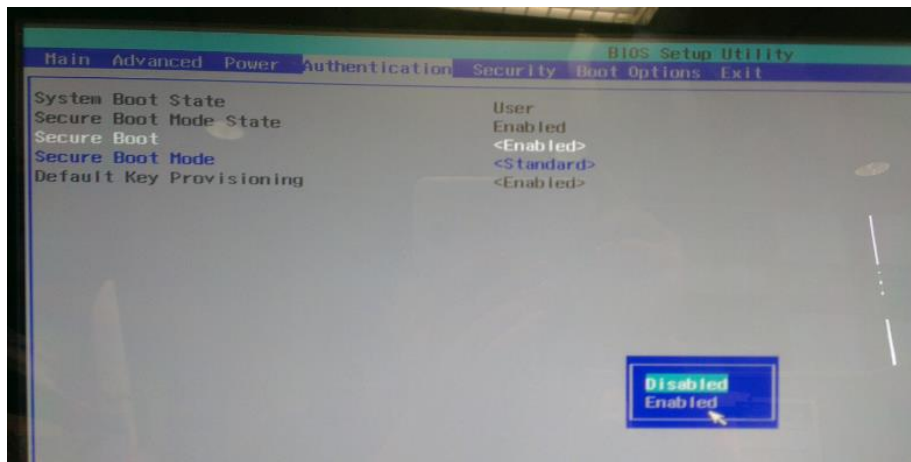


How to establish
Bootable USB disk.zij

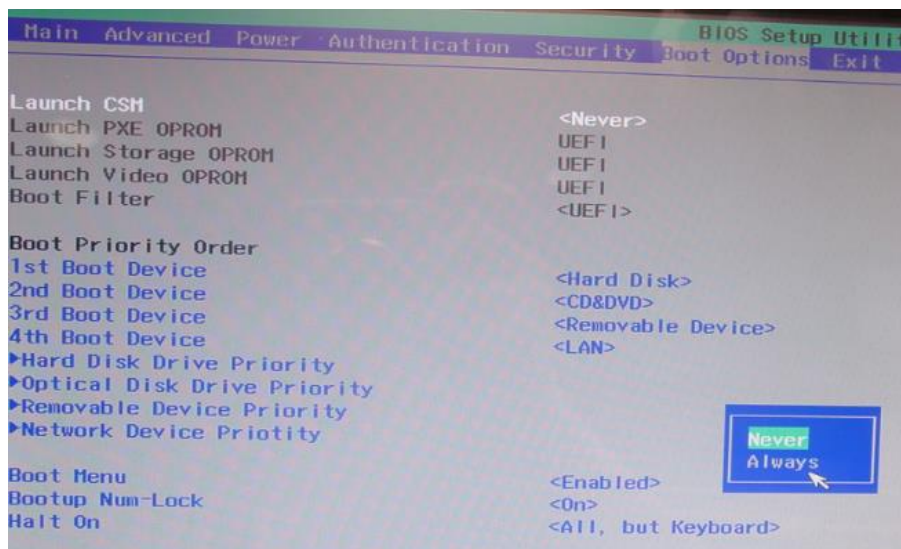
2. Make sure system is plugged in AC adaptor.
3. Copy “**0H2R01B3.exe**” file to bootable USB storage.
4. Insert bootable USB storage into the USB port of DT.
5. Press power button to turn on DT.
6. When Post logo displayed, press DEL key enter BIOS setup menu.



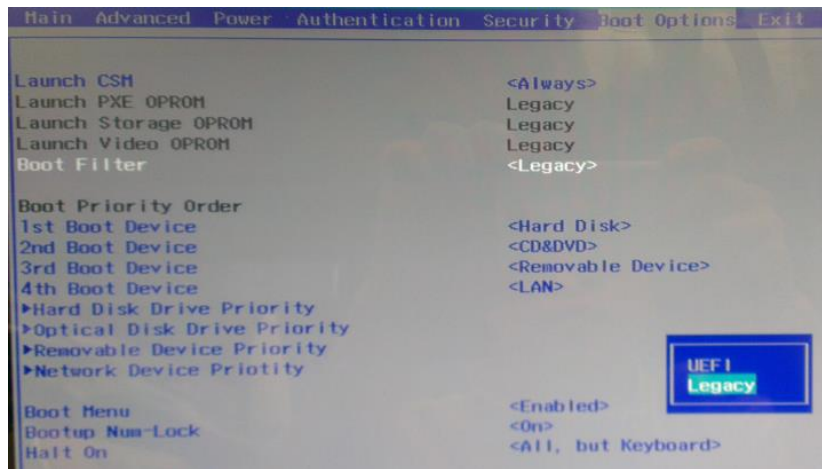
7. In BIOS setup menu, move to Authentication page and change “Secure BOOT” item from “Enabled” to “Disabled”.



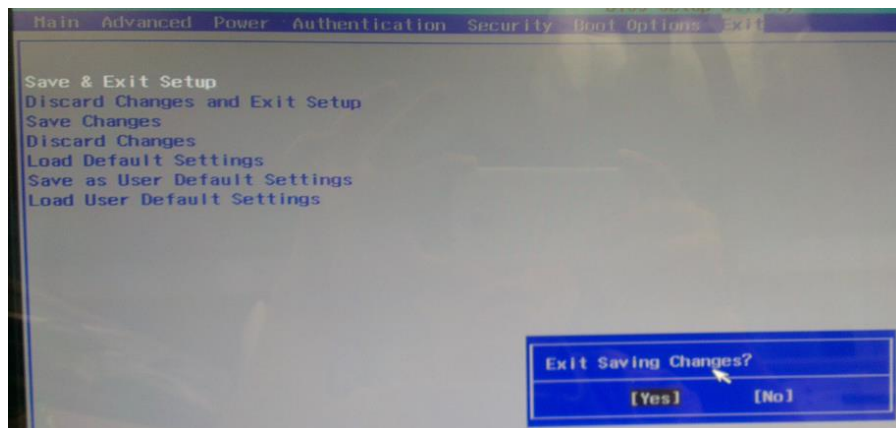
8. In BIOS setup menu, move to Boot Options page and change “Launch CSM” item from “Never” to “Always”.



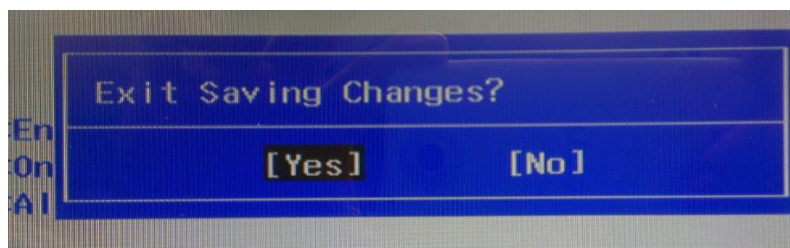
9. In BIOS setup menu, move to Boot Options page and change “Boot Filter” item from “UEFI” to “Legacy”.



10. In BIOS setup menu, move to Exit page and Press “Enter” to continue.



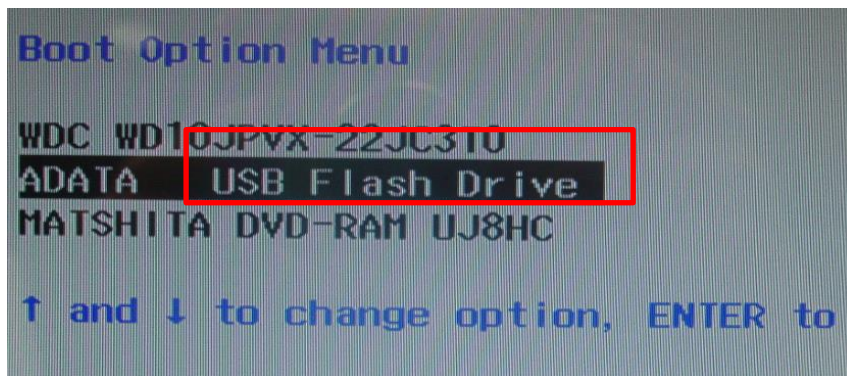
11. Press “Enter” to continue, select “Yes” to save setting and exit BIOS menu..



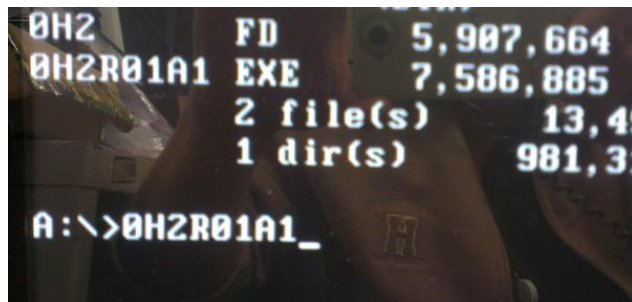
12. When Post logo displayed, press F12 key enter Boot Manager page.



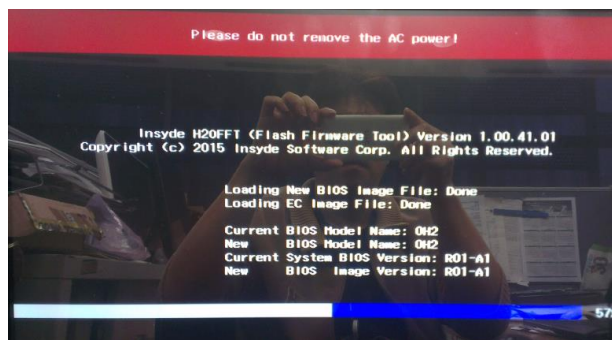
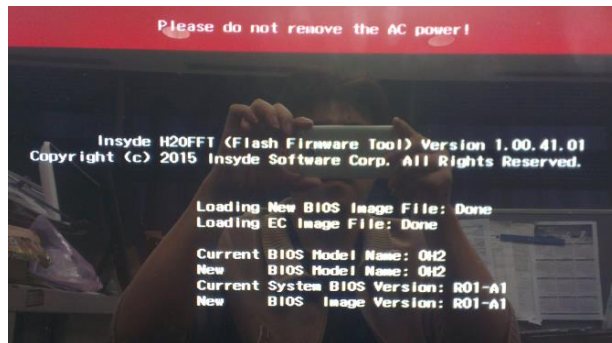
13. Select the USB storage that plugged into DT, then boot to DOS.



14. Run "0H2R01A1.exe" under DOS Mode.

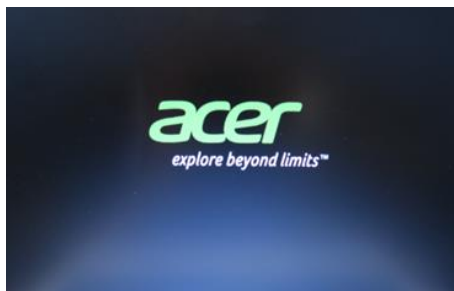


15.It will auto restart once and then show up flash BIOS process as below screenshot:



16.When flash process done, system will auto restart.

17.When Post logo displayed, press DEL key enter BIOS setup menu.



18. Access the Information page of BIOS setup menu, make sure BIOS version is same as updated BIOS version.

